

Description of additional modifications of custom indicator *MACD MA Price*

All presented modifications allow to add color in histogram (see image).

MACD MA Price-3:

MACD = **MACD_MA_method** (Applied_price, Fast_period) - **MACD_MA_method** (Applied_price, Slow_period)
SIGNAL = Signal_MA_method (MACD, Signal_period),

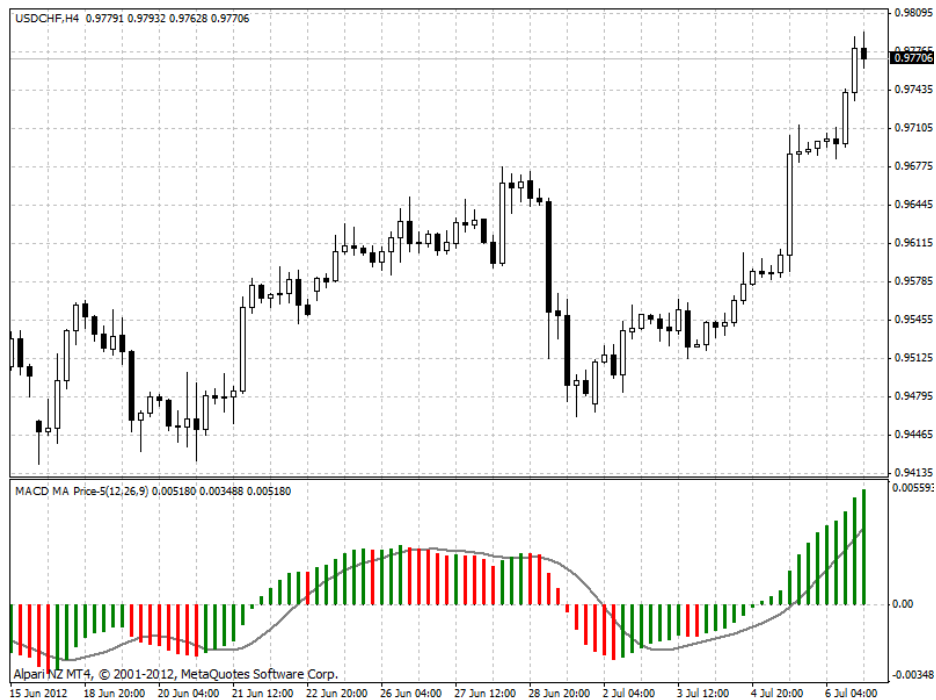
MACD MA Price-4:

MACD = **MACD_MA_method_1** (Applied_price, Fast_period) - **MACD_MA_method_2** (Applied_price, Slow_period)
SIGNAL = Signal_MA_method (MACD, Signal_period),

MACD MA Price-5:

MACD = **MACD_MA_method_1** (MACD_price_1, Fast_period) - **MACD_MA_method_2** (MACD_MA_method_2, Slow_period)
SIGNAL = Signal_MA_method (MACD, Signal_period),

Image



Indicator MACD MA Price-5